



The **Lakes**

Building Project



A place to gather and grow...



At The Lakes we have so much to thank God for. From a core group of 30 people who met together in 2001, we have grown to a weekly attendance of almost 400 people. It is a great blessing to be part of the growing family of God's people here at The Lakes!

However... there is still a huge task ahead if we are going to reach our region with the gospel of Jesus. When The Lakes started, our goal was to reach 10% of the Tuggerah Lakes area for Christ. Obviously that is a goal that we can only achieve through God's blessing and in partnership with other churches.

Our church catchment along Wyong Rd (including Wyong and Ourimbah) is approximately 80,000 people. For there to be 10% of our catchment in church would require 20 churches the size of The Lakes! At the moment we are already saturating the community facilities that are available to us and we are only scratching the surface in reaching our region.

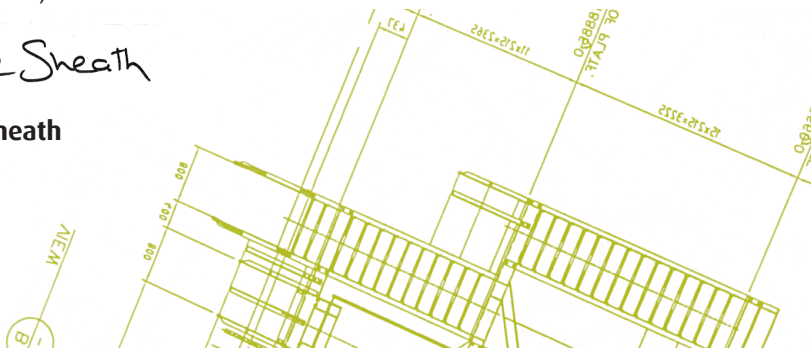
In August this year we gathered a group of more than twenty key leaders from The Lakes to map out a strategic plan to take us through to 2015. One of the key convictions that came out of that day was the need to occupy our own building. The following information is to help you understand why we are taking this step and how you can be involved.

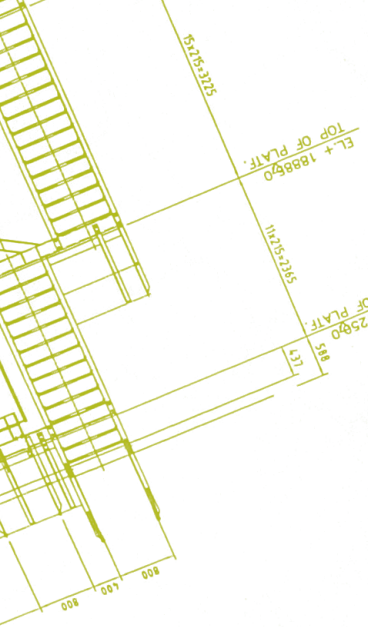
Please read it thoughtfully, asking God to give his people wisdom, generosity and a partnership in building his kingdom.

Your brother,

Dave Sheath

David Sheath





How can I give to this project?

1. Set up a one-off and/or regular electronic transfer through your internet banking. Bank details are:

Westpac, Tuggerah

BSB: 032 627

Account No: 178706

(Please note that this is a different account than we use for normal giving.)

2. Use the Glebe Planned Giving system. By completing the relevant form, we can debit your account on a one-off, weekly, fortnightly or monthly basis.
3. Giving by cash or cheque in a marked envelope through the offering bags on any Sunday.

Other ways of contributing to this project are:

1. Depositing money with The Lakes Investment Fund (available early 2009) helping to reduce the amount of interest The Lakes will be charged.
2. Making The Lakes a beneficiary in your will.

In the next few weeks, Craig Ayling and Dave Sheath will be visiting our small groups to further discuss these issues and answer any questions you may have. Please do not hesitate to approach either of them personally should you like to have further discussions regarding the project.

Building Christ's church by proclaiming his word so that God is glorified